



Wittmann

ANDES

SEPTEMBER 2020

WITTMANN NICHETTO WORKSHOP

AN OUTSTANDING DESIGN JOURNEY
FROM VENICE TO VIENNA
BY LUCA NICHETTO FOR WITTMANN

V





- 01 — Venice
- 02 — Milano
- 03 — Vienna
- 04 — Technical data

01 — VENICE

WITTMANN NICHETTO WORKSHOP

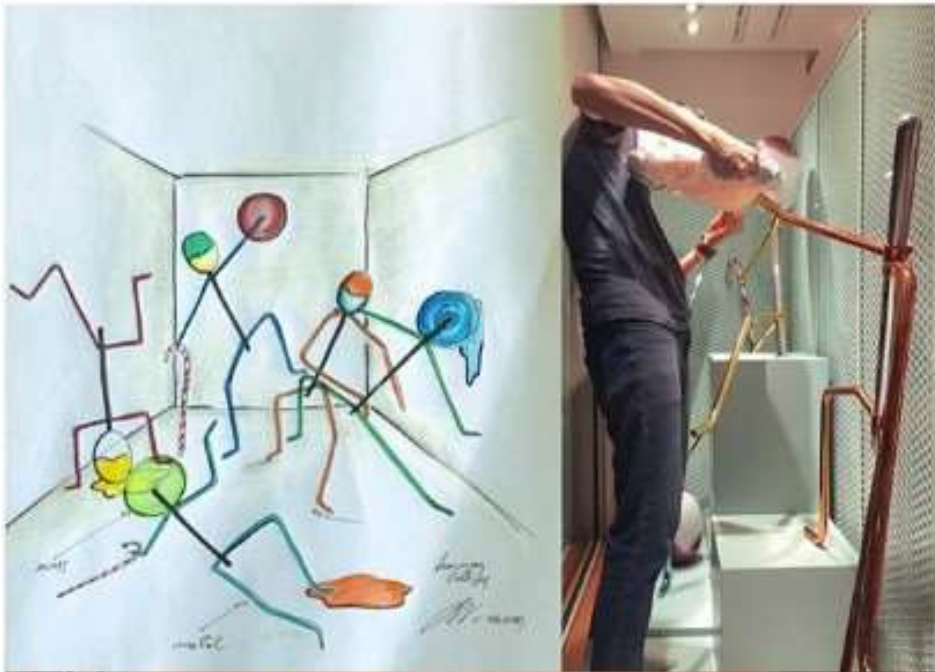
Special items of furniture are in greater demand than ever. Life in the age of social distancing calls for more than just functional seating and reclining options. Living in these times is a tug of war between retreat and protection on the one hand, and the desire for company and spending time together on the other. With his carefully thought-through collection for Wittmann Möbel Werkstätten, Luca Nichetto has answered this brief with his characteristic exceptional eye for forms, lines, proportion and handcrafted details. The outcome is an eclectic collection of communicative pieces that can be arranged in a wide variety of constellations, and in response to a wide range of moods and requirements. Luca Nichetto deftly cites the opulence of classicism and the refined elegance of Viennese Modernism, maintaining the right balance between lightness and comfort. The peerless quality of the materials and the immense wealth of details in each of the elements tells an unmistakable tale of matchless craftsmanship influenced by Venice and Vienna.



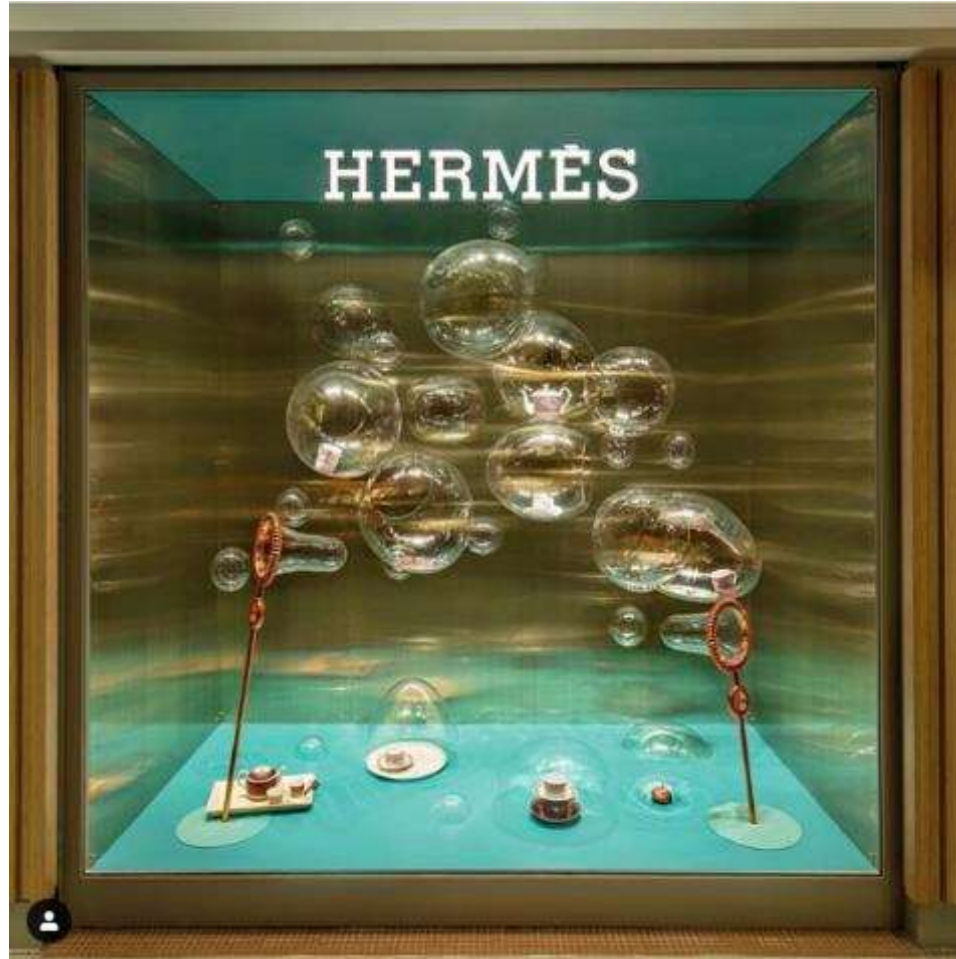
Luca Nichetto

Born in 1976 in Venice Luca Nichetto studied at the city's Istituto statale d'arte, before undertaking a degree in industrial design at the Università Iuav di Venezia. In 1999, Nichetto began his career with Murano-based glass maker Salviati, later working for lighting company Foscari. In 2006, he founded his office in Venice and opened a second studio in Stockholm, Sweden in 2011, where he lives now. Nichetto has served as art director for many international design brands and has developed an in-depth knowledge of the design industry. His work has been exhibited worldwide and has received many international prizes for his highly researched, innovative design projects, which range across product design, as well as incorporating architecture and exhibition design.





Hermès



Hermès



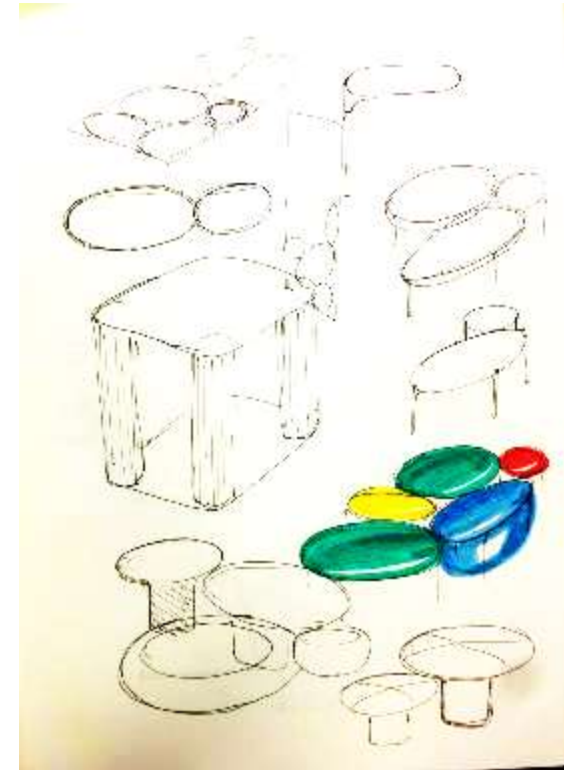
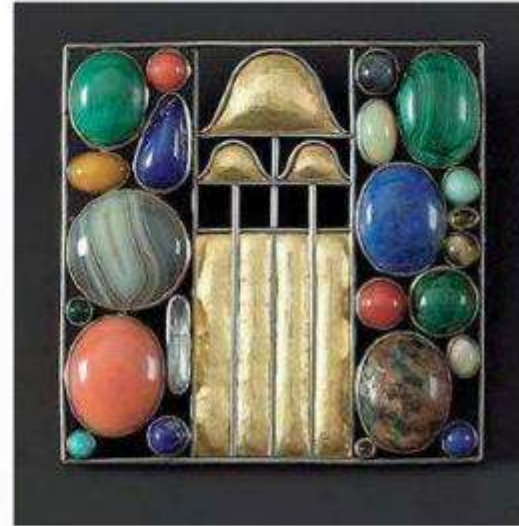
Hermès



Lamp Fusa for Svenskt Tenn



Doorstop Nessie for Monitillo Marmi



NICHETTOSTUDIO	CLIENT	WITTMANN	PROJECT	WITTMANN NICETTO WORKSHOP	DATE	20.10.2018
	WWW	www.nichettostudio.com	TYPE		PAGE	33 / 134

Andes



Andes is a new interpretation of classically elegant salon furniture – bearing all the hallmarks of a great Viennese tradition. The individual elements in this family can be positioned to spectacular effect, as required, to present a new face to the world. With a virtually limitless number of combinations possible, Andes’ personality adapts to its surroundings by offering countless individual configuration options – no matter which of the world’s cultural circles it is introduced to. Available in a choice of two heights, the delicate metal structure gives the organically shaped cushions the appearance of floating. Perfectly handcrafted, the lines traced out by the dual piping bear the signature of Wittmann Wittmann Möbel Werkstätten’s master craftsmanship. Maximum seating comfort comes courtesy of the feeling of gentle support delivered by Wittmann’s trademark intelligent use of a pocket-sprung core.



Andes is ideally suited for playful combinations of different-sized elements, seating heights, low and high backrest cushions, and coloured seat cushions. Footstools and tables can be brought in to coalesce with the group configuration, or positioned independently to the side of the ensemble. In terms of covering options, a wide range of materials and colours create new and highly individualistic impressions – underscored by design details that only true handcraftsmanship can produce.



Antilles

During the Wiener Werkstätte's heyday at the turn of the 19th and 20th centuries, Josef Hoffmann designed a set of bold brooches. Created using traditional craftsmanship, these colourful and timeless items of jewellery provide the inspiration for Luca Nichetto's unusual table collection. Available in different rare marble hues, the round or elliptical table tops can be slid beneath one another in myriad combinations to create distinctive and spirited table landscapes.



Acacia

This side table brings together form, material and finish to stunning effect. Acacia's formal language cites classical Viennese elegance, while the beautiful glass plinth has clear echoes of Murano glass artistry. A high-quality metal frame in black chrome combined with an exclusive leather covering gives rise to a unique piece exuding craftsmanship influenced by Venice and Vienna.

02 — MILANO







03 — VIENNA



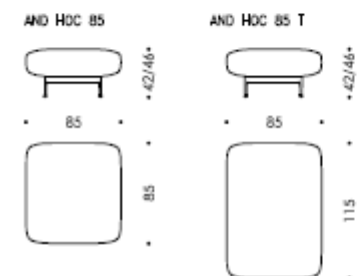
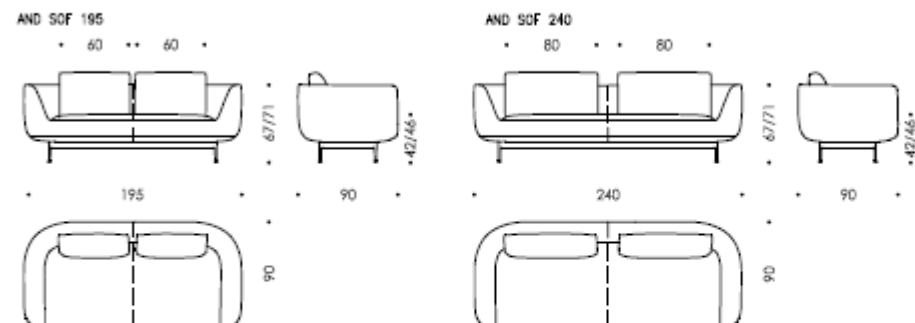




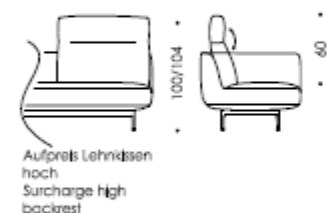
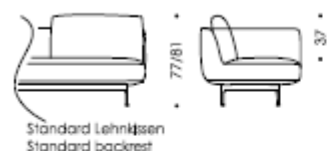


04 — TECHNICAL DATA

ANDES Sofas Design: Wittmann Nichetto Workshop

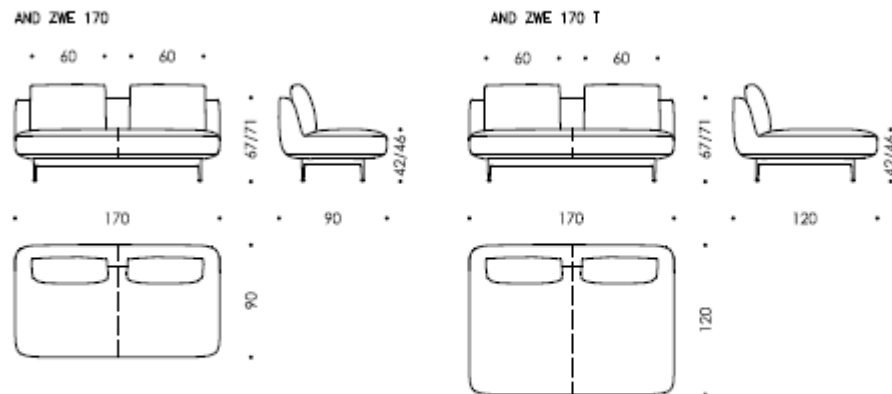


--- Teilungsnaht



	AND SOF 195	AND SOF 240	AND HOC 85	AND HOC 85 T
Sitzbreite in cm:	152	197	85	85
Sitzbreite in in:	59,84	77,56	33,46	33,46
Sitzbreite in in:	59,84	77,56	33,46	33,46
Sitzbreite in cm:	56	56	85	115
Sitzbreite in in:	22,05	22,05	33,46	45,28
Sitzbreite in in:	22,05	22,05	33,46	45,28
Wdh/dth in in:	76,77x26,38x35,43x16,54	94,49x26,38x35,43x16,54	33,46x16,54x33,46x16,54	33,46x16,54x45,28x16,54

ANDES Elements Design: Wittmann Nichetto Workshop

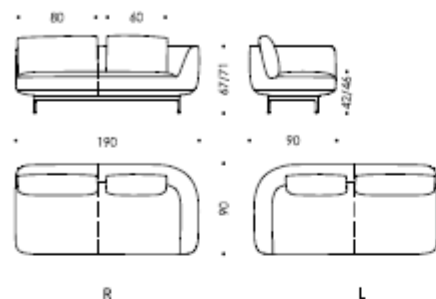


--- Teilungsnaht

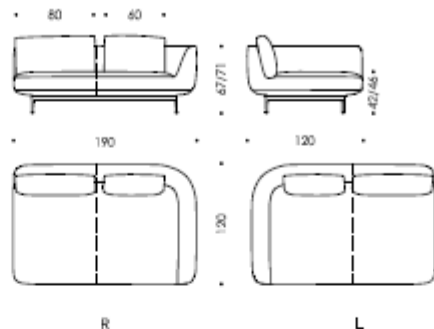
	AND ZWE 170	AND ZWE 170 T
Sitzbreite in cm:	170	170
Sitzbreite in in:	66,93	66,93
Sitzbreite in in:	66,93	66,93
Sitzbreite in cm:	56	86
Sitzbreite in in:	22,05	33,86
Sitzbreite in in:	22,05	33,86
Wdh/dth in in:	66,93x26,38x35,43x16,54	66,93x26,38x47,24x16,54

ANDES Elements *Design: Wittmann Nichetto Workshop*

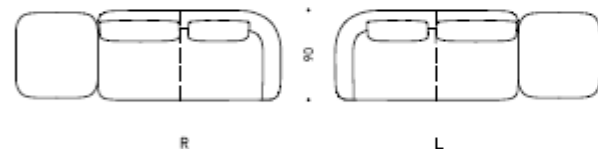
AND ABE R 190
AND ABE L 190



AND ABE R 190 T
AND ABE L 190 T



AND ABE R 277 ABL
AND ABE L 277 ABR



Standard Lehnkissen
Standard backrest

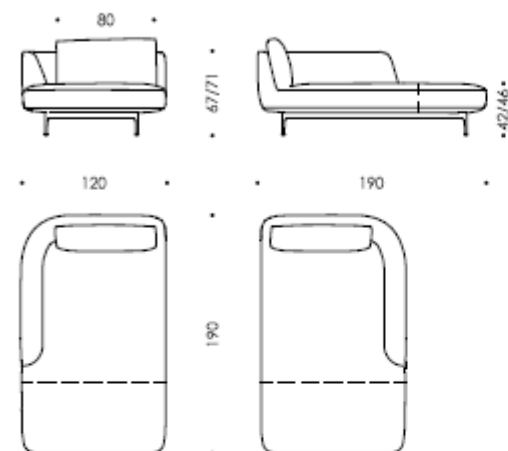


Aufpreis Lehnkissen hoch
Surcharge high backrest

--- Teilungsnaht

ANDES Elements *Design: Wittmann Nichetto Workshop*

AND CHL L 190
AND CHL R 190



L

R

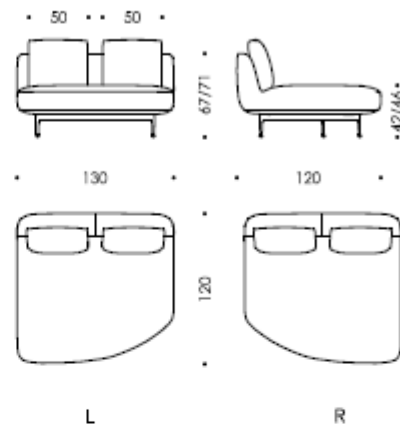


Standard Lehnkissen
Standard backrest



Aufpreis Lehnkissen hoch
Surcharge high backrest

AND SOE L 130
AND SOE R 130



L

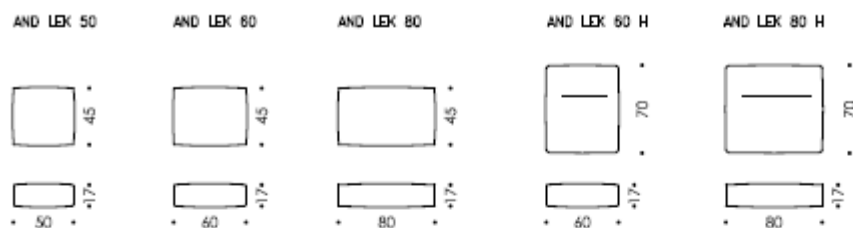
R

--- Teilungsnaht

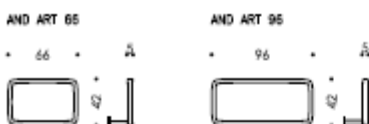
	AND ABE L 190 AND ABE R 190	AND ABE L 190 T AND ABE R 190 T	AND ABE L 277 AND ABE R 277
Sitzbreite in cm:	170	170	170
Seating width in cm:			
Sitzbreite in inches:	66,93	66,93	66,93
Seating width in inches:			
Sitztiefe in cm:	56	86	56
Seating depth in cm:			
Sitztiefe in inches:	22,05	33,86	22,05
Seating depth in inches:			
Widht in inches:	74,41x26,77x37,40x17,32	74,41x26,77x47,24x17,32	90,95x26,77x37,40x17,32

	AND CHL L 190 AND CHL R 190	AND SOE L 130 AND SOE R 130
Sitzbreite in cm:	86	130
Seating width in cm:		
Sitzbreite in inches:	33,86	51,18
Seating width in inches:		
Sitztiefe in cm:	65,35	86
Seating depth in cm:		
Sitztiefe in inches:	22,05	33,86
Seating depth in inches:		
Widht in inches:	47,24x26,38x74,80x16,54	51,18x26,38x47,24x16,54

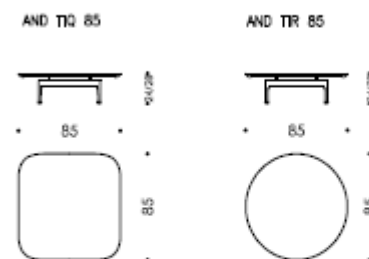
ANDES *Design: Wittmann Nichetto Workshop*



ANDES *Design: Wittmann Nichetto Workshop*

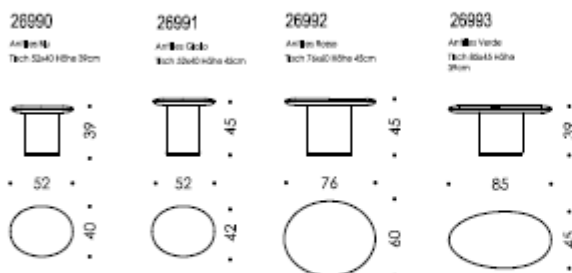


ANDES *Design: Wittmann Nichetto Workshop*



	AND TIQ 85	AND TIR 85
Measure in cm:	85x85x24	Ø=85x24
width in inches:	33,46x33,46x9,45	Ø=33,46x9,45

ANTILLES *Design: Wittmann Nichetto Workshop*



	26990	26991	26992	26993
Measure in cm:	52x40x39	52x42x45	76x60x45	85x45x39
width in inches:	20,47x15,75x15,35	20,47x16,54x17,72	29,92x23,62x17,72	33,46x17,72x15,35

Acacia Table *Design: Wittmann Nichetto Workshop*



	24880
Measure in cm:	Ø=42x55
measure in inches:	Ø=16,54x21,65



Kontakt

WITTMANN

Möbelwerkstätten

Obere Marktstrasse 5

A-3492 Etsdorf / Kamp

Tel +43 2735 2871

Fax +43 2735 2877

www.wittmann.at

info@wittmann.at

Copyright

Bitte beachten Sie, dass diese Präsentation rechtlich geschützte und vertrauliche Informationen enthalten kann und urheberrechtlich geschützt ist. Jegliche Verwertung (insbesondere Vervielfältigung, Verbreitung, Zurverfügungstellung, etc.) dieser Präsentation bzw. einzelner Teile/Inhalte davon ist ausschließlich nach vorheriger schriftlicher Genehmigung durch den Rechteinhaber gestattet.

Please note that this presentation may contain legally protected and confidential information and is protected by copyright. Any use (in particular copying, distribution, making available, etc.) of this presentation or individual parts/contents thereof is only permitted with the prior written consent of the copyright holder.